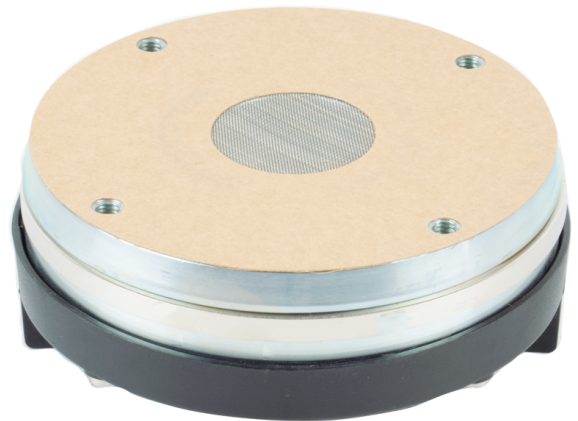


KEY FEATURES

- 1,4" exit (36 mm) high frequency compression driver
- 2,8" (72,2 mm) voice coil diameter
- 140 W program power above 1.5 kHz
- Sensitivity: 108 dB, 1W / 1m
- Shorting copper cap for extended response
- Titanium dome with polyester surround
- Lightweight aluminium voice coil
- Neodymium magnet



TECHNICAL SPECIFICATIONS

Nominal diameter	36 mm	1,4 in
Rated impedance		8 Ω
Minimum impedance		7,5 Ω
D.C. resistance		5,5 Ω
Power capacity ¹	50 W _{AES} above 0,8 kHz	
	70 W _{AES} above 1,5 kHz	
Program power ²	100 W above 0,8 kHz	
	140 W above 1,5 kHz	
Sensitivity ³	108 dB 1W / 1m @ Z _N	
	coupled to TD-385	

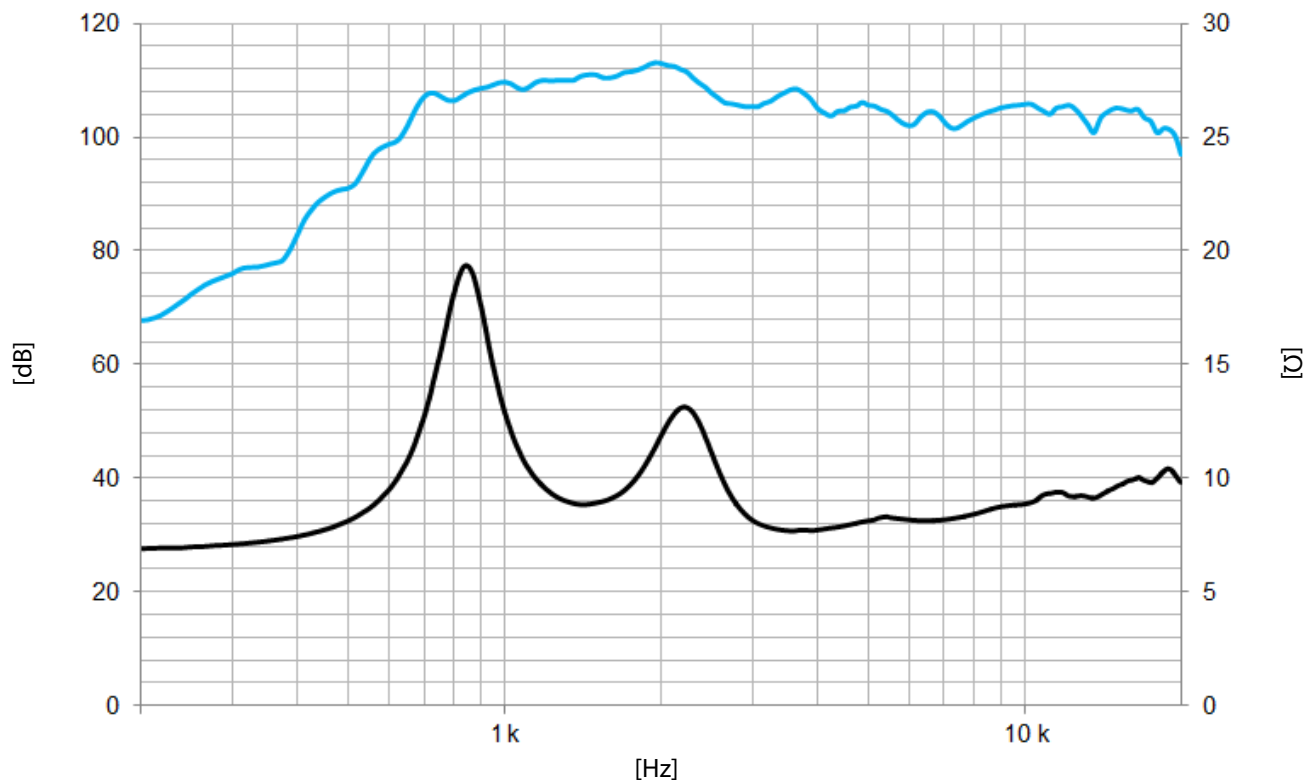
Frequency range		0,6 - 20 kHz
Recommended crossover		0,8 kHz or higher (12 dB/oct min.)
Voice coil diameter	72,2 mm	2,8 in
Magnetic assembly weight	2,1 kg	4,6 lb
Flux density		2 T
BI factor		11,3 N/A

Notes:

¹ The power capacity is determined according to AES2-1984 (r2003) standard.

² Program power is defined as the transducer's ability to handle normal music program material.

³ Sensitivity was measured at 1m distance, on axis, with 1W input, averaged in the range 1 - 7 kHz



Note: On axis frequency response measured coupled to TD-385 horn in anechoic chamber, 1W / 1m

MOUNTING INFORMATION

Overall diameter	123 mm	4,8 in
Depth	53 mm	2,1 in
Mounting	Four M6 threaded holes, 90° apart on 101,6 mm (4 in) diameter circle	
Net weight	2,2 kg	4,8 lb
Shipping weight	2,7 kg	5,9 lb

DIMENSION DRAWING

