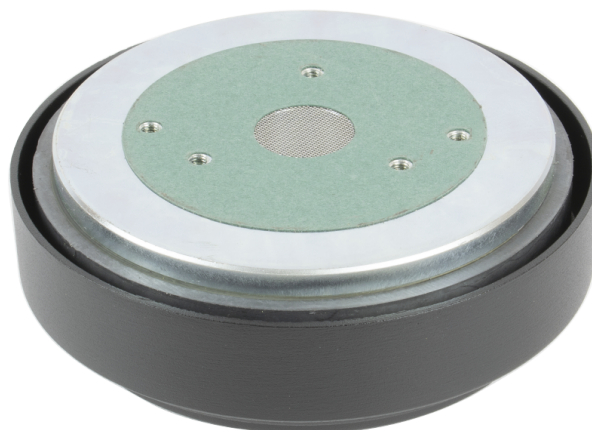


KEY FEATURES

- 1" (25,4 mm) high frequency compression driver
- 140 W program power above 1,5 kHz
- Sensitivity 107 dB (1W / 1m)
- Ultra lightweight edgewound aluminium ribbon voice coil

- Polyester diaphragm
- Aluminium cover
- Ferrite magnet



TECHNICAL SPECIFICATIONS

Nominal diameter	25,4 mm	1 in
Rated impedance		8 Ω
Minimum impedance		5,2 Ω
D.C. resistance		4,3 Ω
Power capacity ¹	70 W _{AES} above 1,5 kHz	
Program power ²	140 W above 1,5 kHz	
Sensitivity ³	107 dB 1W / 1m @ Z _N	coupled to TD-250

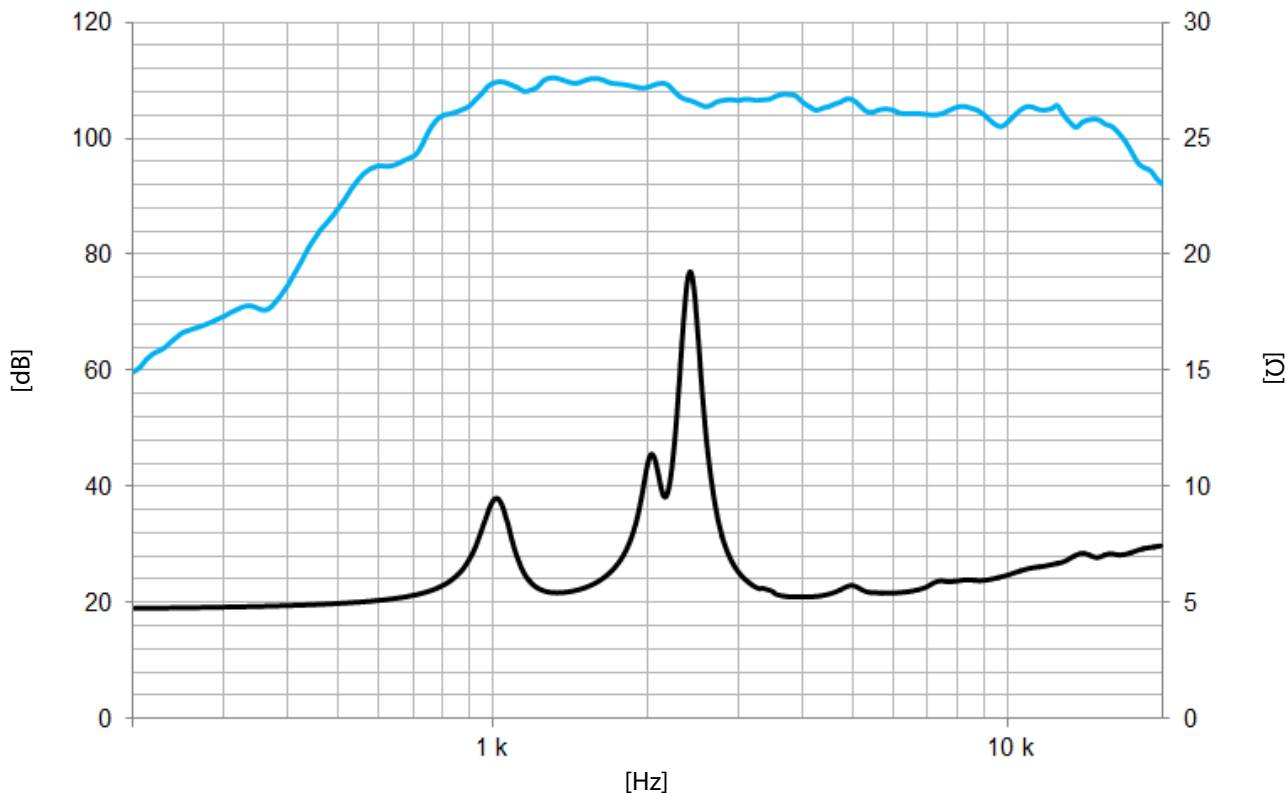
Frequency range	0,8 - 20 kHz	
Recommended crossover	1,2 kHz or higher (12 dB/oct min.)	
Voice coil diameter	44,4 mm	1,75 in
Magnetic assembly weight	3,0 kg	6,6 lb
Flux density	2 T	
BI factor	7 N/A	

Notes:

¹ The power capacity is determined according to AES2-1984 (r2003) standard.

² Program power is defined as the transducer's ability to handle normal music program material.

³ Sensitivity was measured at 1m distance, on axis, with 1W input, averaged in the range 1 - 7 kHz



Note: On axis frequency response measured coupled to TD-250 horn in anechoic chamber, 1W / 1m

MOUNTING INFORMATION

Overall diameter	146 mm	5,7 in
Depth	69 mm	2,7 in
Mounting	Three M5 threaded holes, 120° apart on 57 mm (2,24 in) diameter circle Two M5 threaded holes, 180° apart on 76,2 mm (3 in) diameter circle	
Net weight	3,2 kg	7,2 lb
Shipping weight	3,4 kg	7,5 lb

DIMENSION DRAWING

